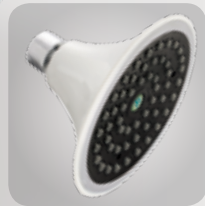


Sava Spa™ Showerhead

N2515, N2517

FEATURES AND BENEFITS



Also Available in White

Rubber Spray Nozzles
for Easy Cleaning



360° Swivel



Constant Output Regardless of Pressure



Low Water Pressure



High Water Pressure

Finishes & Flow Rates

	1.5	1.75
Chrome	N2515CH	N2517CH
White	N2515	N2517

Sava Spa™ Showerhead

Water Savings Without Sacrificing Performance

- 1.5 GPM saves 40% more than standard showerheads
- Niagara's patented pressure compensating technology guarantees a consistent flow rate across wide range of pressure
- Single spray function, wide spray coverage
- 360° ball joint swivel for adjustment
- Extra large spray head, 4.4" diameter
- Corrosion resistant high-impact ABS thermoplastic body
- Easy to clean
- Limited lifetime warranty**

POTENTIAL SAVINGS* with 1.5 GPM Model

	Water (Gallons)	Electric (kWh)	Gas (therms)	Dollars
Water Savings	10,959			\$88
Energy Savings with Electric Water Heater		1,607		\$214
Energy Savings with Gas Water Heater			55	\$52

*Factors in calculating savings potential:

- 3-person households each using a shower 10 minutes per day, 365 days per year
- Comparing water use with this 1.5 GPM showerhead vs. a standard 2.5 GPM unit
- Water and sewer cost of \$8 per 1,000 gallons
- 8.34 BTUs to raise the temperature of 1 gallon of water 1°
- 500.4 BTUs to raise the temperature of 1 gallon 60° (i.e. 50° to 110°)
- 1 million BTUs = 293 kWh
- Average cost of electricity \$0.133 per kWh (Bureau of Labor Statistics Sept 2012)
- Average cost of gas \$0.953 per therm (Bureau of Labor Statistics Sept 2012)
- On multi-flow rate heads, savings calculated using the avg of available flow rates

Corporate HQ

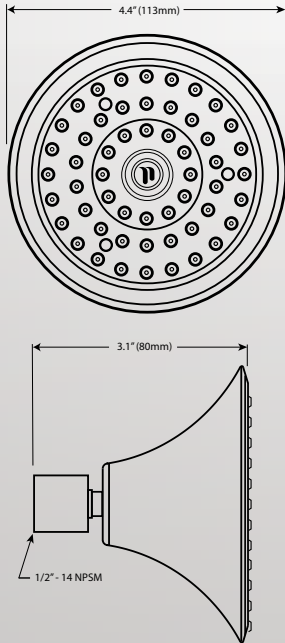
4200 Diplomacy Road
Fort Worth, TX 76155 USA
Toll Free: 800.831.8383
Phone: 817.391.0800 Fax: 817.391.0801
Email: info@nccgreen.com



Sava Spa™ Showerhead

N2515, N2517

SPECIFICATIONS



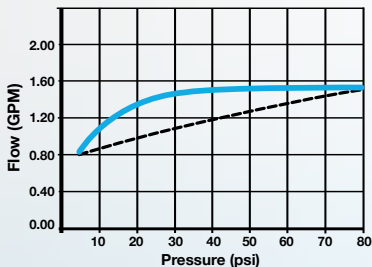
*Dimensions are subject to change

Overall Dimensions	Diameter 4.4" Depth 3.1"
Materials	Body: Durable ABS plastic
Finishes Available	Chrome and White
Threads	Inlet size: 1/2-14 NPSM female straight pipe thread
Certifications	Meets or exceeds: ASME A112.18.1/CSA B125.1, Watersense labeled. ASTM B368



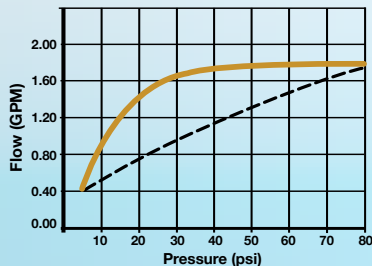
Consistent Flow Rate Across Wide Range of Pressure

1.5 GPM Flow Rate



1.5 Pressure Compensated Spray Non-Pressure Compensated Spray

1.75 GPM Flow Rate



1.75 Pressure Compensated Spray Non-Pressure Compensated Spray

Item Number	Max. Flow Rate	Min. Flow Rate @ 45psi
N2515 N2515CH	Max. 1.5 GPM (5.7 LPM)	Min. 1.13 GPM (4.3 LPM)
N2517 N2517CH	Max. 1.75 GPM (6.6 LPM)	Min. 1.31 GPM (5.0 LPM)

**WARRANTY FOR SHOWERHEADS PURCHASED AT RETAIL:

Limited Lifetime Warranty for showerheads purchased at retail for as long as the original purchaser owns the product. Niagara will replace any part that, in our opinion has proved defective, provided it has not been abused, misused, altered or damaged after its purchase. For complete product warranty details, call Niagara Conservation at 1-800-831-0800.

WARRANTY FOR SHOWERHEADS OBTAINED THROUGH WHOLESALE, MUNICIPALITIES, UTILITIES OR OTHER COMMERCIAL CHANNELS:

10-year Limited Warranty to the purchaser from the date of purchase. Niagara will replace any part that, in our opinion has proved defective, provided it has not been abused, misused, altered or damaged after its purchase. For complete product warranty details, call Niagara Conservation at 1-800-831-0800.

Corporate HQ

4200 Diplomacy Road
Fort Worth, TX 76155 USA
Toll Free: 800.831.8383
Phone: 817.391.0800 Fax: 817.391.0801
Email: info@nccgreen.com



Sava Spa™ Showerhead

N2515, N2517

PACKAGING

Retail Packaging:
Blistercard Display Packaging



Retail Displaying:
Shipping and Displaying Tray

RETAIL PACKAGING

Item No	RN2517CH
UPC Code	732291000048
Type of Packaging	Blistercard Display Packaging
Pack Quantities	6 Blistercard Tray and RSC Per Master Carton
Dimensions Ea. Pkg.	Width 6.6" Height 9.7" Depth 4.0"
Weight Ea. Pkg.	0.69 lbs
I205 Master	10732291000045
Dimensions of Master	Width 11.25" Height 8" Depth 25.5"
Weight of Master	4.97 lbs

Bulk Packaging:
Bubblewrap Bag



BULK PACKAGING

Item No	N2517CH, N2517, N2515CH, N2515
UPC Code	N2517CH 732291251723 1.75 GPM Chrome N2517 732291251716 1.75 GPM White N2515CH 732291251532 1.5 GPM Chrome N2515 732291251525 1.5 GPM Chrome
Type of Packaging	Kraft Corrugated
Pack Quantities	40 Per Carton
Dimensions of Master	Width 24" Height 8" Depth 19.5"
Weight of Master	15 lbs

Corporate HQ

4200 Diplomacy Road
Fort Worth, TX 76155 USA
Toll Free: 800.831.8383
Phone: 817.391.0800 Fax: 817.391.0801
Email: info@nccgreen.com

